

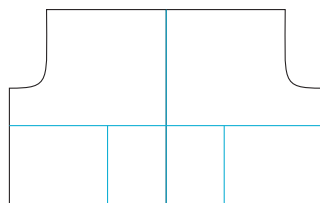
Wee Care Tucked Sleeve

Cut rectangle for sleeve according to the chart at right. Use the armhole curve template for the desired size and draw the armhole curve, then cut on that line to create the sleeve shape.

After cutting the sleeve out, use a blue wash-out marker and draw a vertical line in the center of the sleeve.

Draw a horizontal line above the lower edge of the sleeve according to the chart.

Draw a line to the left and right of the center vertical line according to the chart. It should look like the diagram.



Extra tiny (under 1 lb)	7" W x 3-1/2" H
Tiny (1 - 2 lb.)	8" W x 5" H
Small (3 - 4 lb.)	9" W x 6" H
Preemie (5 - 6 lb.)	10" W x 7" H
Newborn (7+ lb.)	11" W x 8-1/2" H

Horizontal Line Depth

Extra tiny (under 1 lb)	1"
Tiny (1 - 2 lb.)	1-1/2"
Small (3 - 4 lb.)	2"
Preemie (5 - 6 lb.)	2"
Newborn (7+ lb.)	3"

Additional Lines to L & R

Extra tiny (under 1 lb)	1-1/2"
Tiny (1 - 2 lb.)	1-1/2"
Small (3 - 4 lb.)	1-1/2"
Preemie (5 - 6 lb.)	2"
Newborn (7+ lb.)	2-1/4"

On the 3 vertical lines, a tuck will be sewn. Fold the fabric with right sides together and stitch the tuck on each of the lines, from the bottom of the sleeve, stopping at the drawn horizontal line.

For sizes extra tiny, tiny & small, sew a 1/2" tuck (shown in diagram).

For size preemie, sew a 5/8" tuck.

For size newborn, sew a 3/4" tuck.

Press the tucks to create a box pleat with equal amounts of fabric on each side of the stitching.

Tip - a wooden skewer can be used to slide inside the tuck while pressing to make it a bit easier to get a pretty tuck.

Press the lower edge of the sleeve up, wrong sides together) to meet the blue line.

Press the raw edge in to meet the pressed fold to create a hem. Stitch next to the folded edge.

Tip - an edgestitching foot is helpful to get accurate stitching for the hem.

Sew the short seam of the sleeve together with either a tiny French seam (1/8" & 1/8") or with a 1/4" seam allowance, then trim in half and zigzag (1.0 L & 2.5 W) to finish seam allowance.

The sleeve can now be sewn into the gown with a 1/4" seam allowance. If the sleeve was cut and sewn accurately, it will fit perfectly into the u-shape armhole of the gown.

